
**PARK FOR THE DISABLED AT
NALGONDA 'X' ROADS**

Greater Hyderabad Municipal Corporation



PARK FOR THE DISABLED

INTRODUCTION

A disability may be physical, cognitive, mental, sensory, emotional, and developmental or some combination of these.

Disabilities is an umbrella term, covering impairments, activity limitations and participation restrictions. An *impairment* is a problem in body function or structure; an *activity limitation* is a difficulty encountered by an individual in executing a task or action; while a *participation restriction* is a problem experienced by an individual in involvement in life situations. Thus disability is a complex phenomenon, reflecting an interaction between features of a person's body and features of the society in which he or she lives.

- World Health Organization

A disability may occur during a person's lifetime or maybe present from birth.

PARK FOR THE DISABLED

Types of disability:

• **PHYSICAL DISABILITY**

• **SENSORY DISABILITY**

- i. Visual impairment
- ii. Hearing impairment
- iii. Balance disorder

• **INTELLECTUAL DISABILITY**

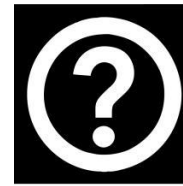
• **MENTAL HEALTH AND EMOTIONAL DISABILITIES**

• **DEVELOPMENT DISABILITY**



Disability Access Sign Symbol Meanings:

1. Universal Information Symbol
2. International Symbol of Accessibility
3. Symbol indicating Audio Description for Theatre & Live Performances
4. Audio Description for TV, Films & Video
5. Large Print / Accessible Print Symbol
6. Symbol indicating Access for Individuals Who Are Blind or Have Low Vision
7. Braille Symbol
8. Telephone Typewriter Symbol
9. Sign Language Interpretation Symbol
10. Assistive Listening Systems Symbol (Ear)
11. Assistive Listening System Symbol (Telephone)
12. Closed Captioning Symbol



1



2



3



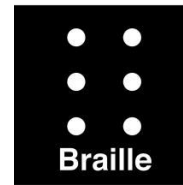
4



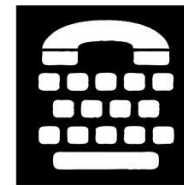
5



6



7



8



9



10



11



12

Desktop Study: Morgan's Wonderland

Mission Statement

To provide a safe, clean beautiful environment free of economic barriers for special needs individuals of all ages.

Vision

The vision at Morgan's Wonderland is to establish a special place where smiles and laughter make wonderful memories with family members caregivers and friends. Where the common element of play creates an atmosphere of inclusion for those with and without disabilities so everyone can gain a greater understanding of one another.



Desktop Study: Morgan's Wonderland

Morgan's Wonderland in San Antonio, the brainchild of the father of a daughter with special needs and billed as the world's first ultra-accessible family fun park, features rides and attractions easily enjoyed by those in wheelchairs or with cognitive disorders.

The park includes rides, interactive exhibits, playgrounds, gardens, a fishing lake and amphitheater. It has Braille signage.

"It is the only one in the world ... (demand) is beyond anything we ever expected."

Admission to the 25-acre park is free for those with cognitive or physical disabilities; family members and friends pay \$5 a person. Kids 3 and under are free. Cost for those without a disabled patron in their party is \$15.



Desktop Study: Morgan's Wonderland

The activities and amenities include three Play scapes, Train Rides with wheelchair accessible cars, ADA accessible restrooms, an Ultra Accessible Carousel, Catch and Release Fishing, Water Canons and Remote-Controlled Boats, a Gymnasium for basketball, volleyball and tennis, and much more.

There is a Special Event Center for up to six-hundred and fifty guests, you can walk and roll around the lake, there is an, 'Around the World, themed picnic and rest area, a Water Play area, and a Race Track.

Morgan's Wonderland has a Music Garden, Swings of several types, to include wheelchair swings, a Sand Circle, Sensory Village, a Garden Sanctuary and Memorial Wall. There are several rest stops, picnic areas and pavilions. Morgan's Wonderland has two first aid stations and a feeding room as well.

The site has Braille signage, and Service Animal rest area. There is a Gift Shop and Counseling Center, as well as a VIA Transit Center



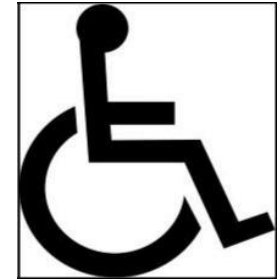
**Everyone is welcome ..
come play with us!**

Proposed park at Nalgonda 'X' Roads

TARGET GROUP

The target group is composed of five major categories:

- (a) Wheelchair users
- (b) People with limited walking abilities
- (c) The sightless
- (d) The partially sighted
- (e) The hearing impaired



Other categories that may benefit to some extent from the proposed measures include the mentally disabled, people susceptible to physical fits, people with extreme physical proportions, and people with functional disabilities of the arm or hand.

Proposed park at Nalgonda 'X' Roads

Area of the proposed site is
1.03 acres(4205 sqm)

Three options are proposed as per
the requirements.

Option 1:

Develop only the park(recreation
purpose) for the disabled in general

Option 2:

Develop the park in isolated zones
each according to the type of
disability

Option 3:

Develop the park in recreation
and therapy zones for all
disabilities together.



Proposed park at Nalgonda 'X' Roads

Area of the proposed site is 1.03 acres (4205

sqm) The park could be divided into two zones:

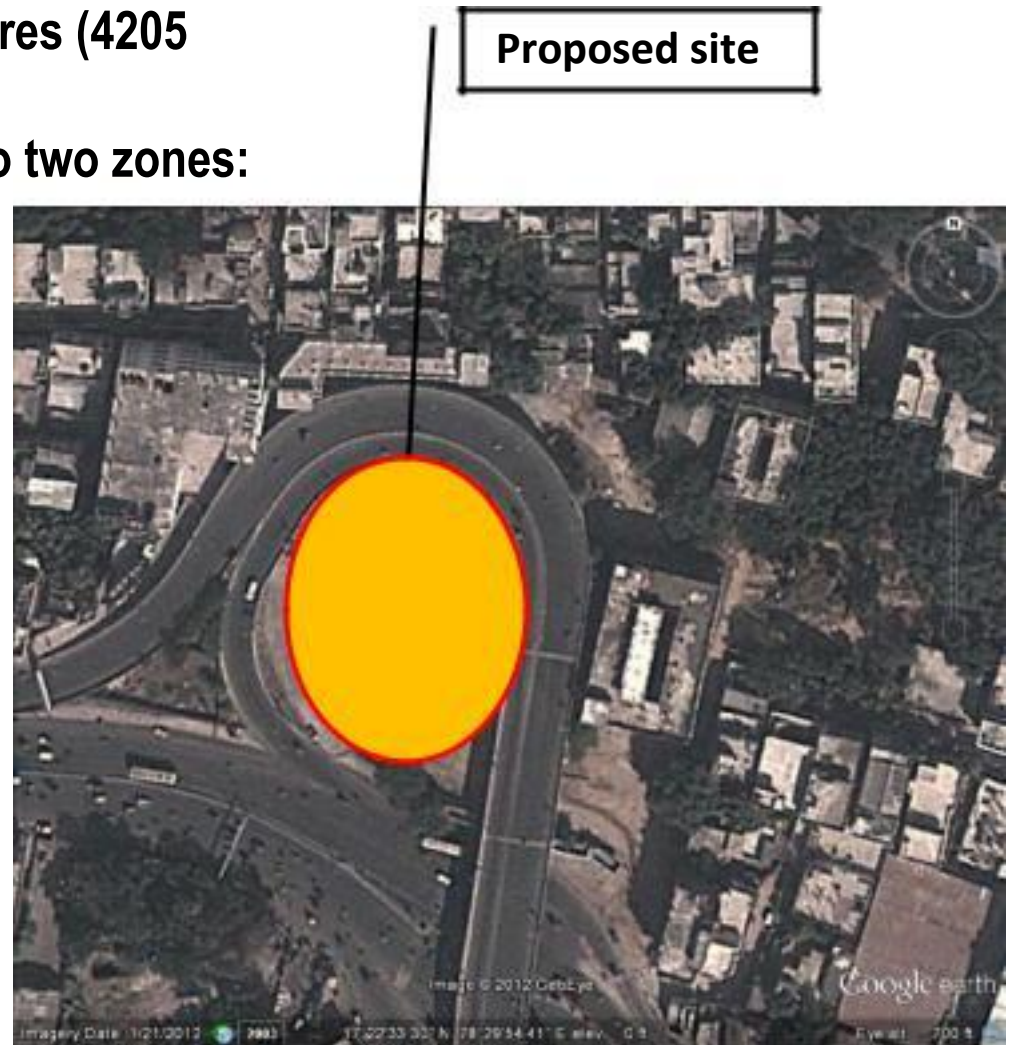
1. Recreation Zone
2. Therapy Zone

Recreation zone could include:

- Rides
- Gardens
- Playfields/Gymnasiums

Therapy zone could include:

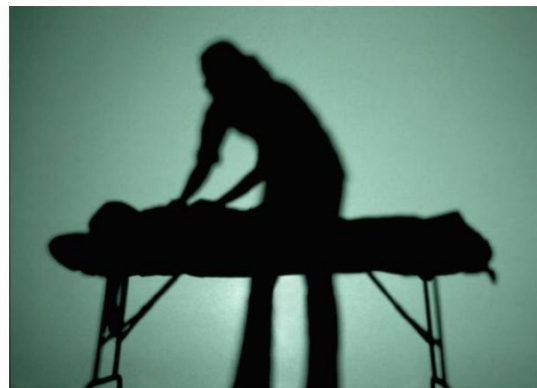
- Physiotherapy
- Art and Music therapies
- Hydrotherapy and others



Proposed park at Nalgonda 'X' Roads

Other facilities include;

- Restrooms with Universal design
- Special events center
- Amphitheater
- First aid stations
- Nursery
- Television stations offering sensory stimulation through lights, colours, sounds and textures.
- Counseling Center



Design Considerations

Obstructions:

The design will be a barrier-free path for the safety and independence of disabled people, especially the sightless.

Signage:

To facilitate orientation mainly for the disabled

Street Furniture:

To design accessible amenities convenient to all people, without obstructing the free passage of pedestrians along travel routes.

Pathways:

To provide accessible parking facilities as close as possible to the point of destination

Curb Ramps:

To overcome changes in level between the pavement and the road surface and also on the pavement itself

Pedestrian Crossing

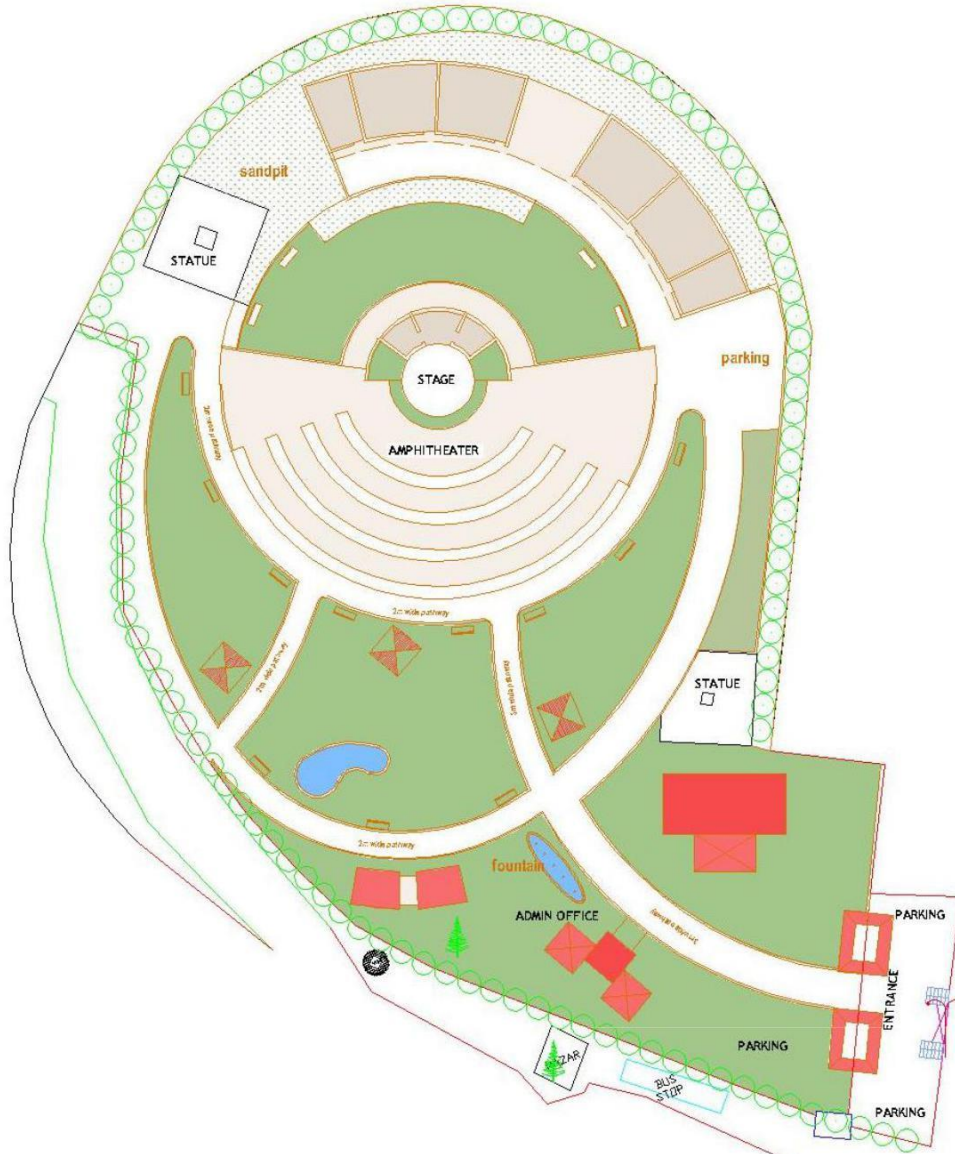
To facilitate the safe and independent crossing of disabled people.

Parking

To provide accessible parking facilities as close as possible to the point of

destination

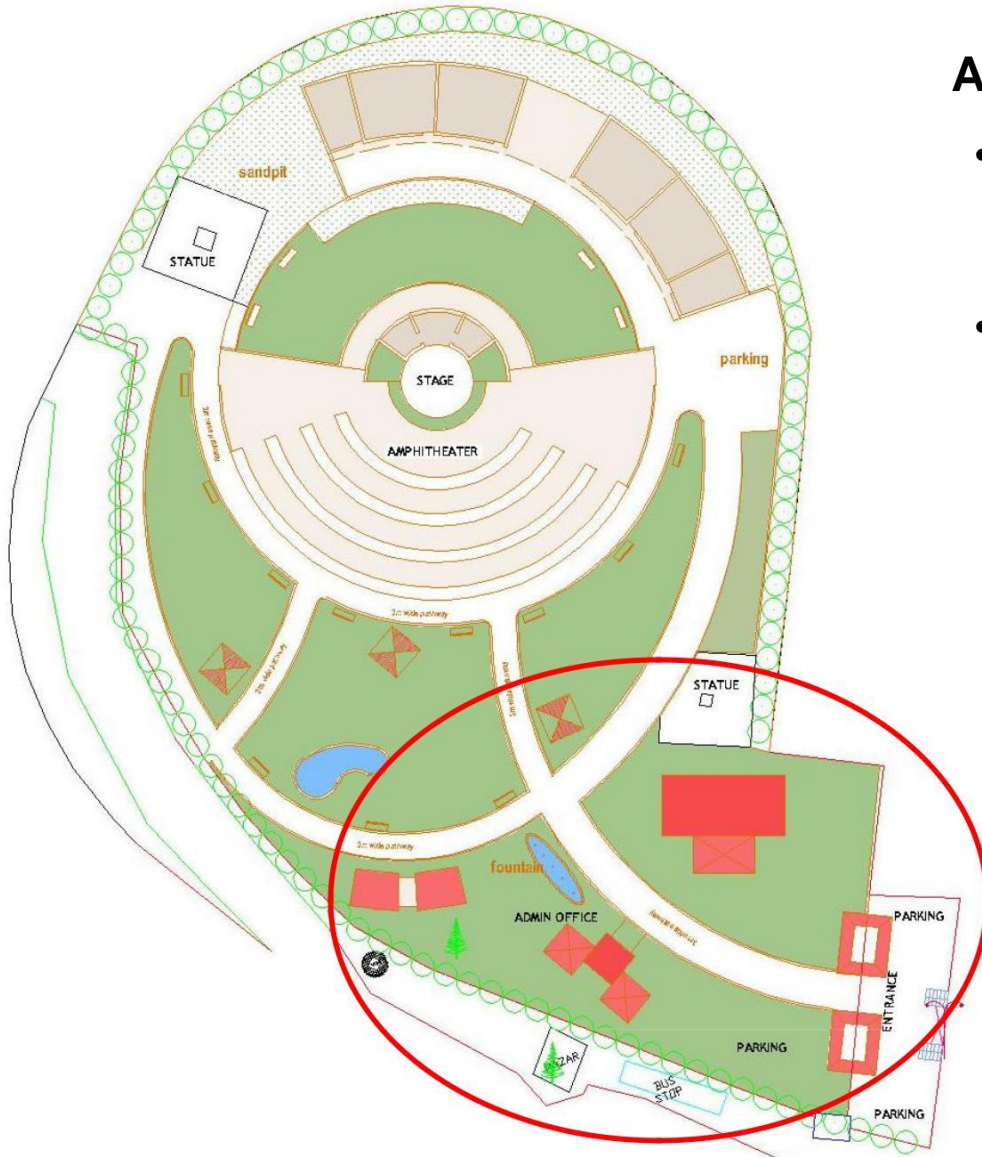
Proposed park at Nalgonda 'X' Roads



SALIENT FEATURES

- Amphitheatre
- Therapy block
- 2m wide wheelchair/pedestrian pathways
- Water body
- Sensory Theater(Event Center)
- Nursery
- Public toilets
- Grand Entrance
- Lawns and Fountains
- Counseling Center

Proposed park at Nalgonda 'X' Roads



ADMINISTRATON BLOCK

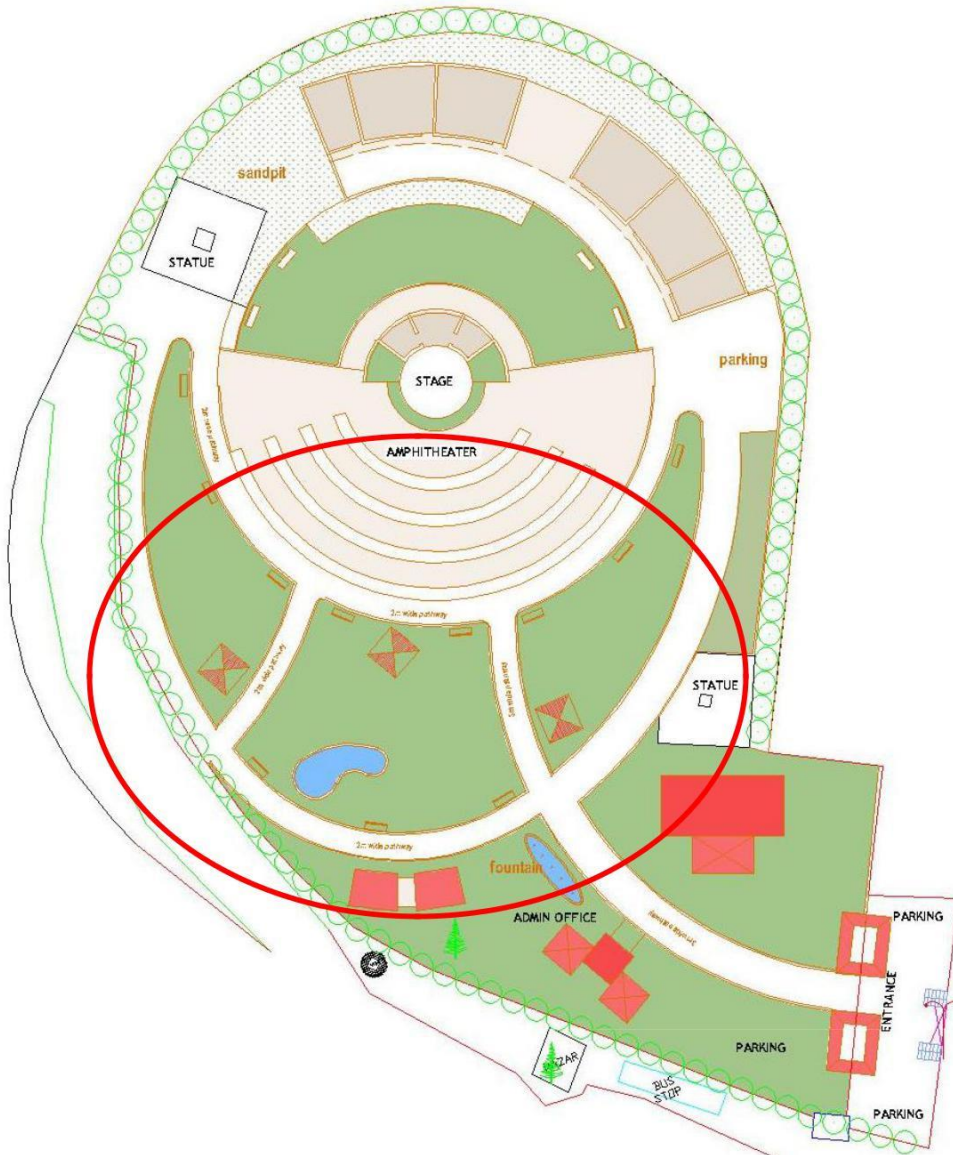
- Administration building for registration and supervision of events
- Sensory Theater for interactive learning for people with special needs of all ages



Proposed park at Nalgonda 'X' Roads

PLAYGROUND

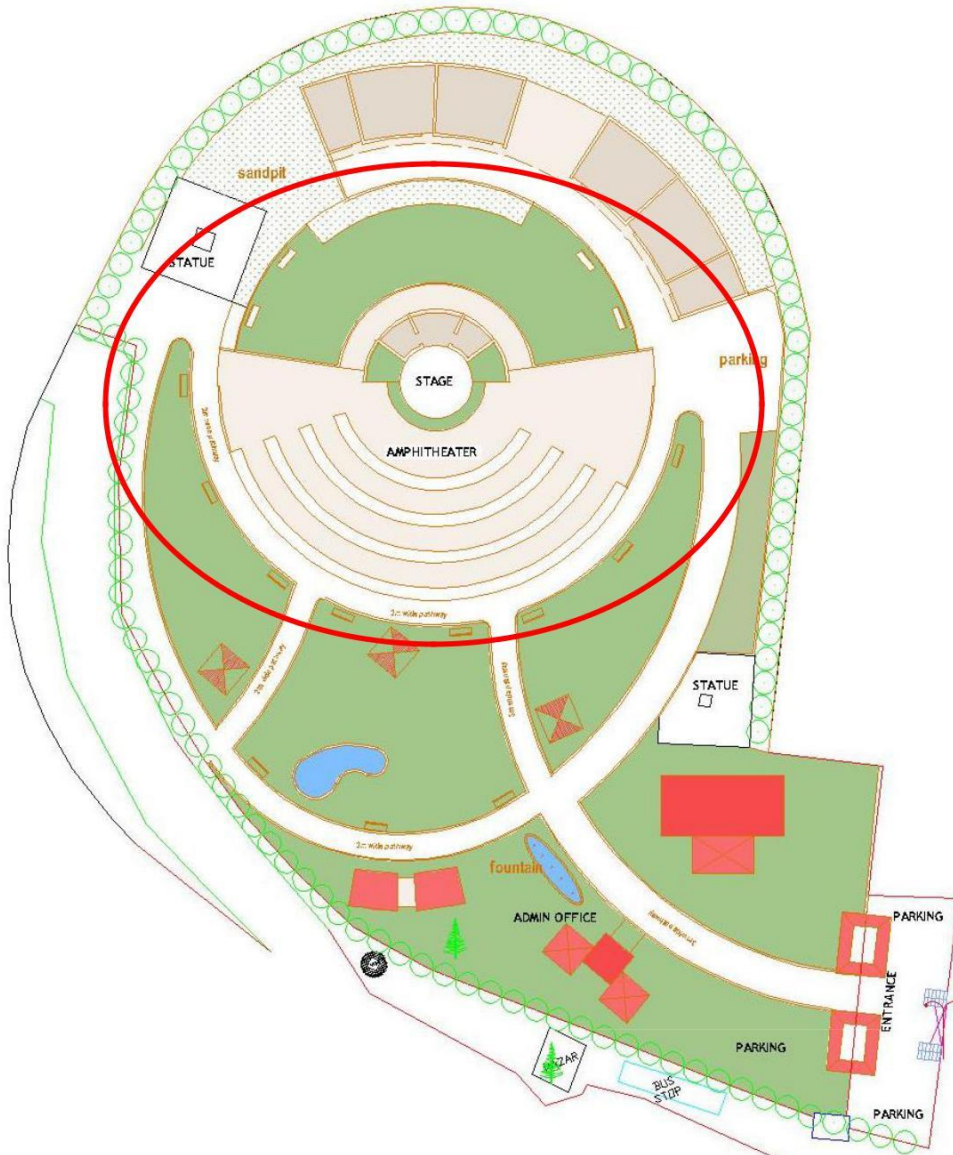
- Equipped with specially designed playing equipment.
- Kiosks for snacks and relaxation



Proposed park at Nalgonda 'X' Roads

AMPHITHEATER

- Amphitheater can accommodate upto 200 persons(able/disabled) with green rooms and stage for performing artists.
- Can be booked for cultural activities of special schools
- Exclusive park for the disabled Children.

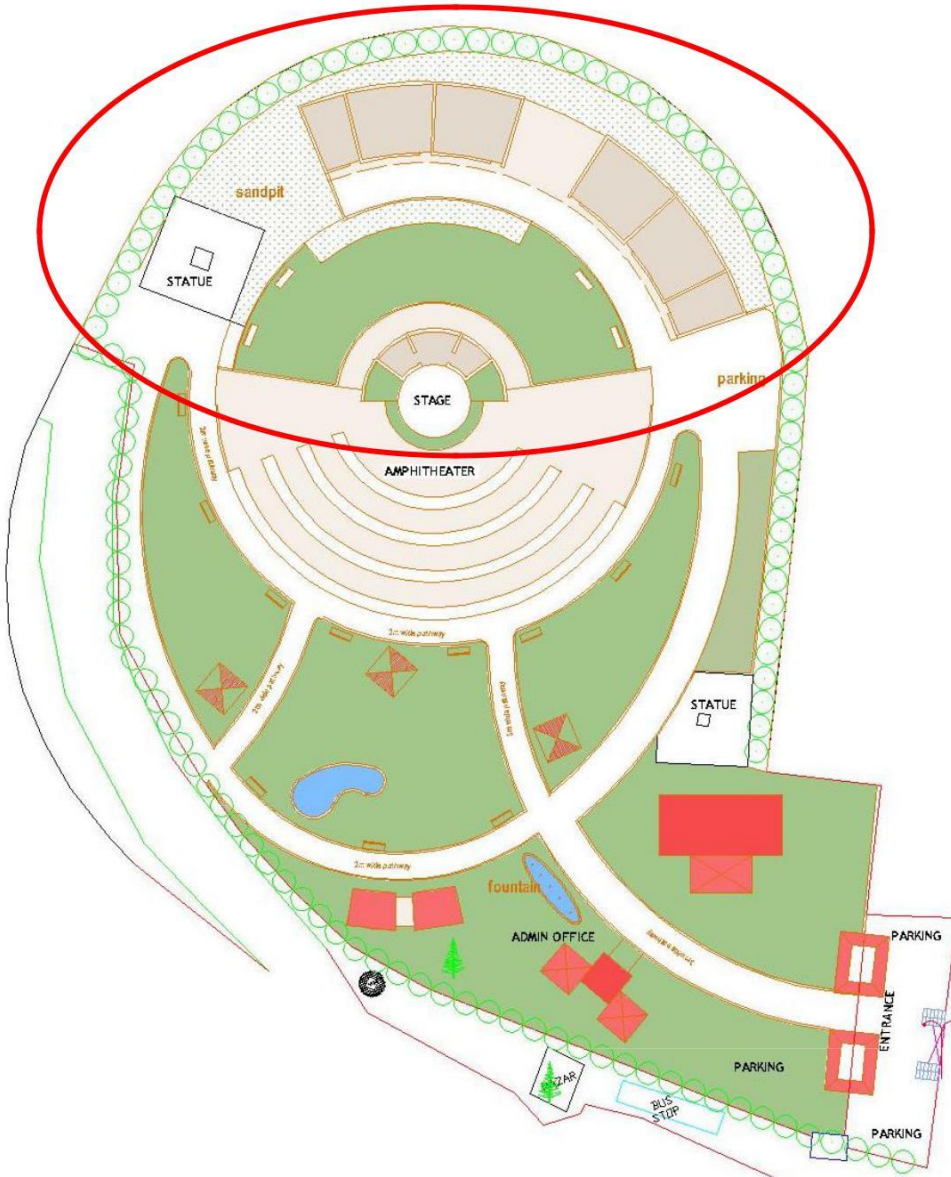


Proposed park at Nalgonda 'X' Roads

THERAPY ZONE

Therapy zone could include:

- Physiotherapy
- Art and Music therapies
- Hydrotherapy and others



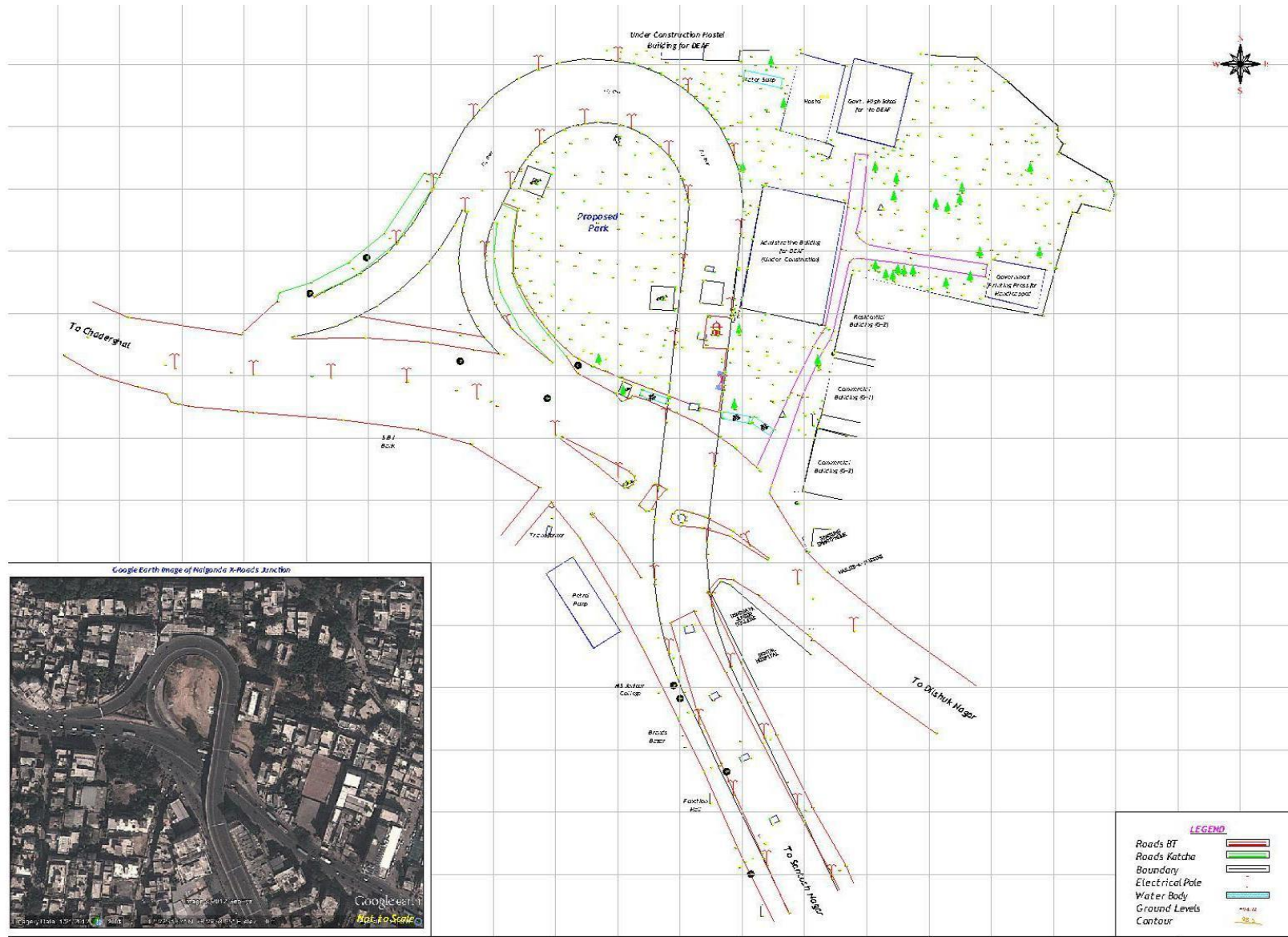
Proposed park at Nalgonda 'X' Roads

SUGGESTIONS FOR REVENUE GENERATION

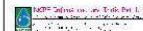
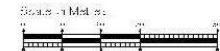
- Amphitheater could be rented out for performing artists on designated days in a week.
- Special Playing equipment which could be expensive can be obtained in the form of donations.
- Sensory Theatre(Event Center) can be open to general public with an entry fee on a few days of the week.
- Admission fee could be collected from persons accompanying the disabled person.
- Fees from hoardings and advertisements, as this is located in a prime area.



PROPOSED PARK FOR THE DISABLED AT NALGONDA CROSS ROADS



Existing Layout of (Proposed Park) at Nalgonda X-Roads



SITE LOCATION – SURVEY LAYOUT

DESIGN CRITERIA

PROPOSED PARK FOR THE DISABLED AT NALGONDA CROSS ROADS

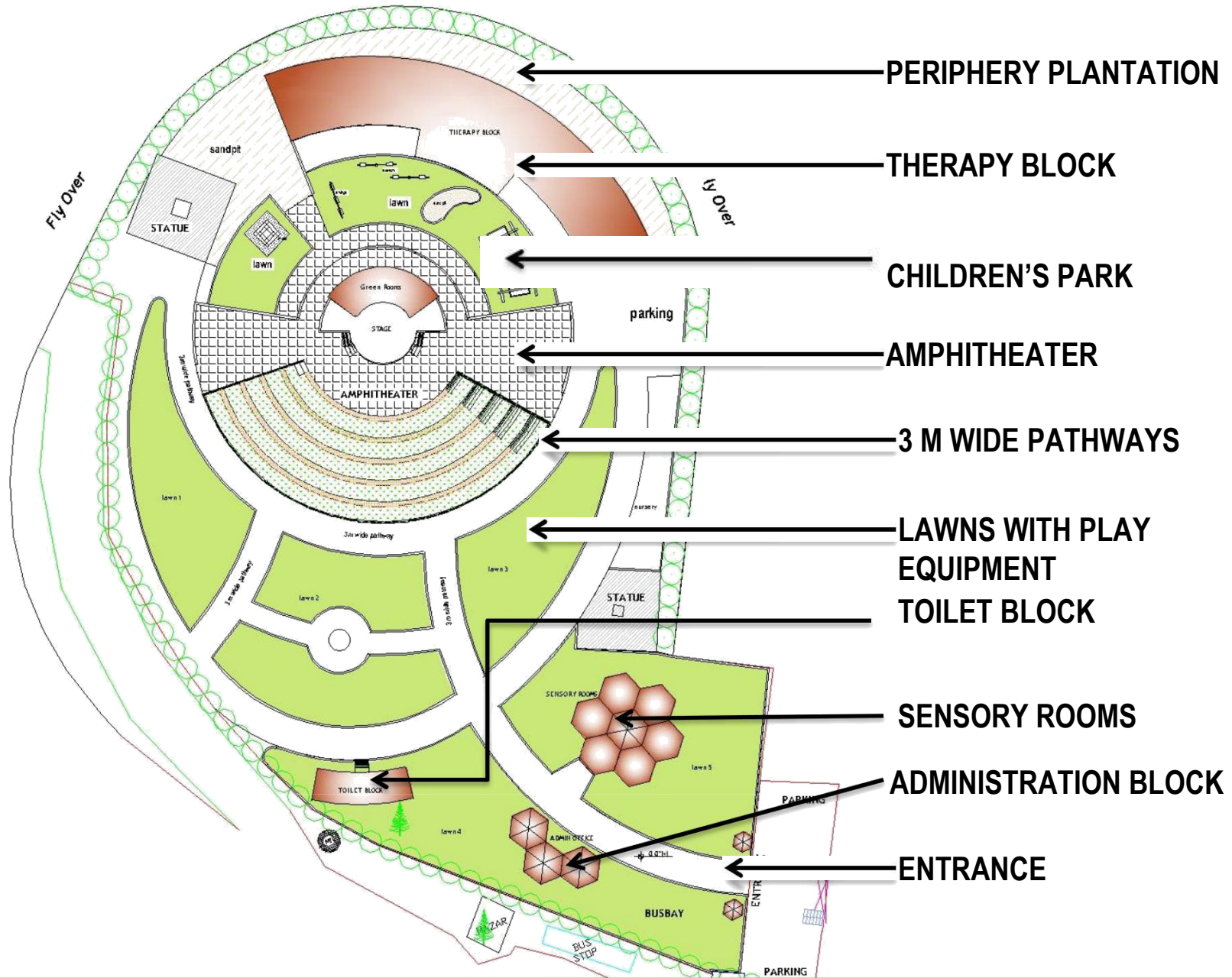
SITE AREA – 1.03 ACRES
4168.26 sqmt



SITE CONNECTIVITY

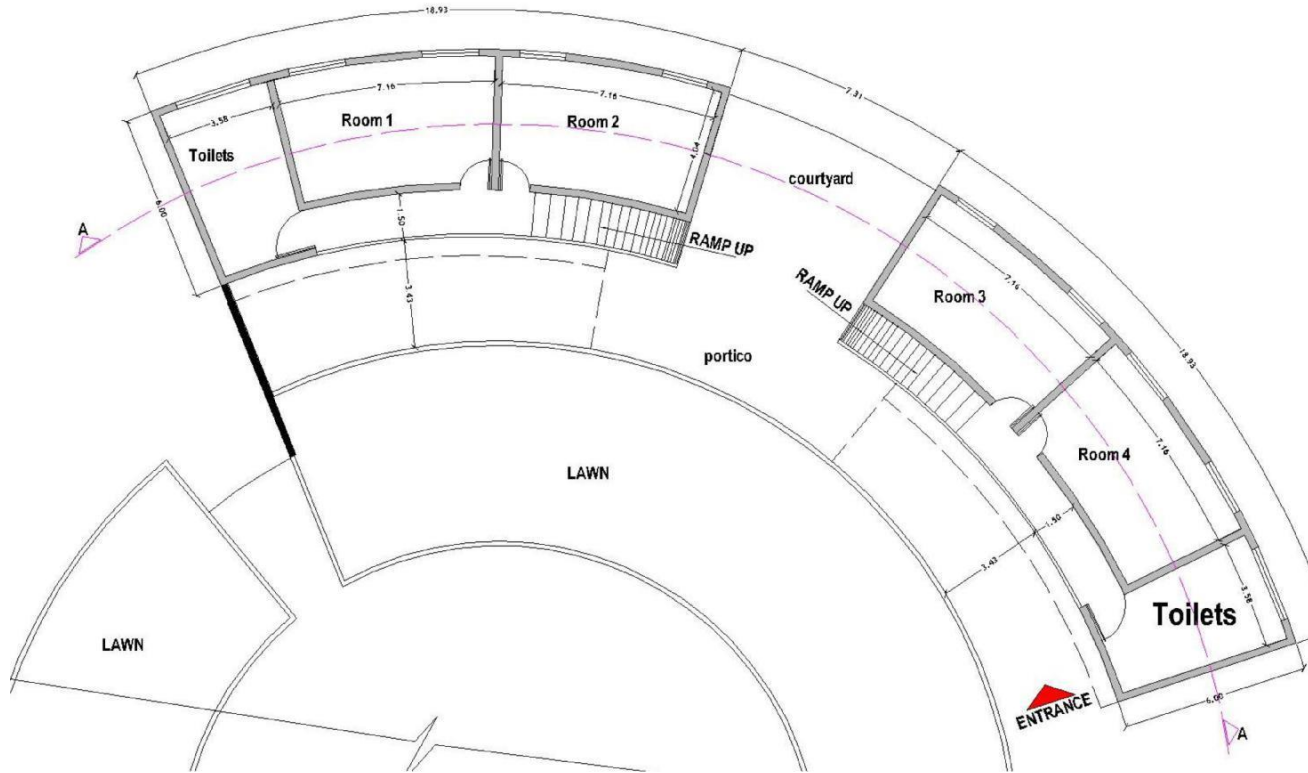
SITE LOCATION - CONNECTIVITY

PROPOSED PARK FOR THE DISABLED AT NALGONDA CROSS ROADS

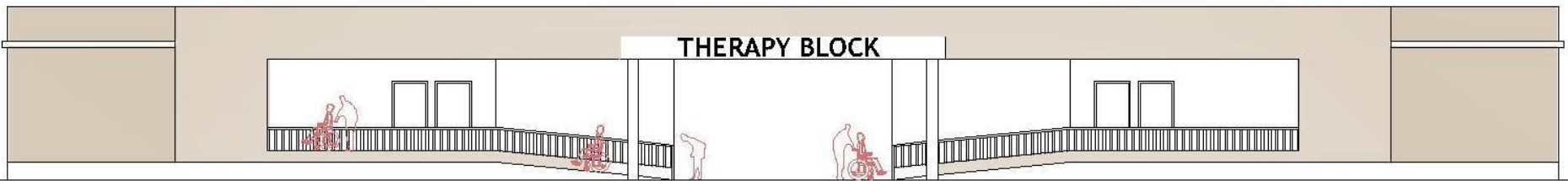


SITE PLAN - SALIENT FEATURES

PROPOSED PARK FOR THE DISABLED AT NALGONDA CROSS ROADS



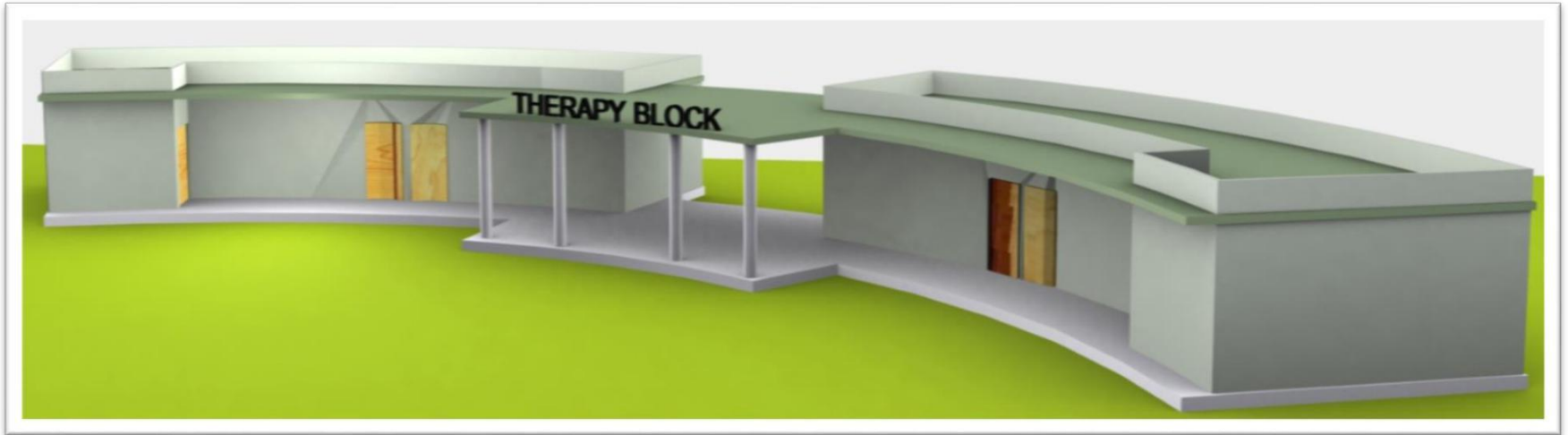
PLAN



FRONT ELEVATION

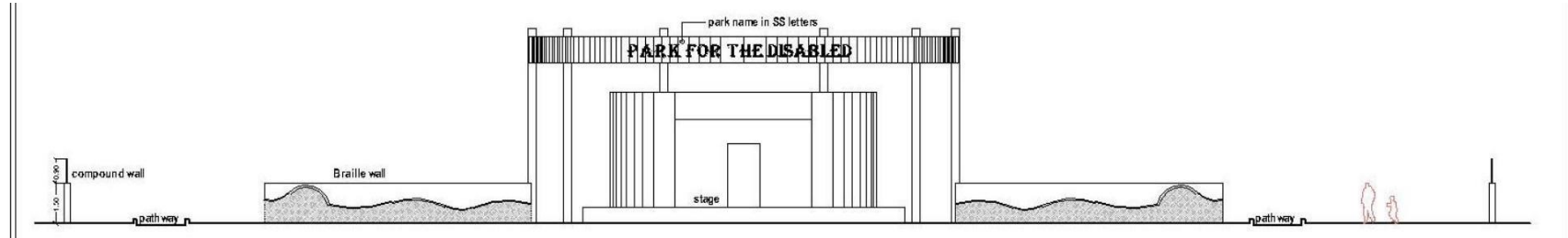
THERAPY BLOCK

PROPOSED PARK FOR THE DISABLED AT NALGONDA CROSS ROADS

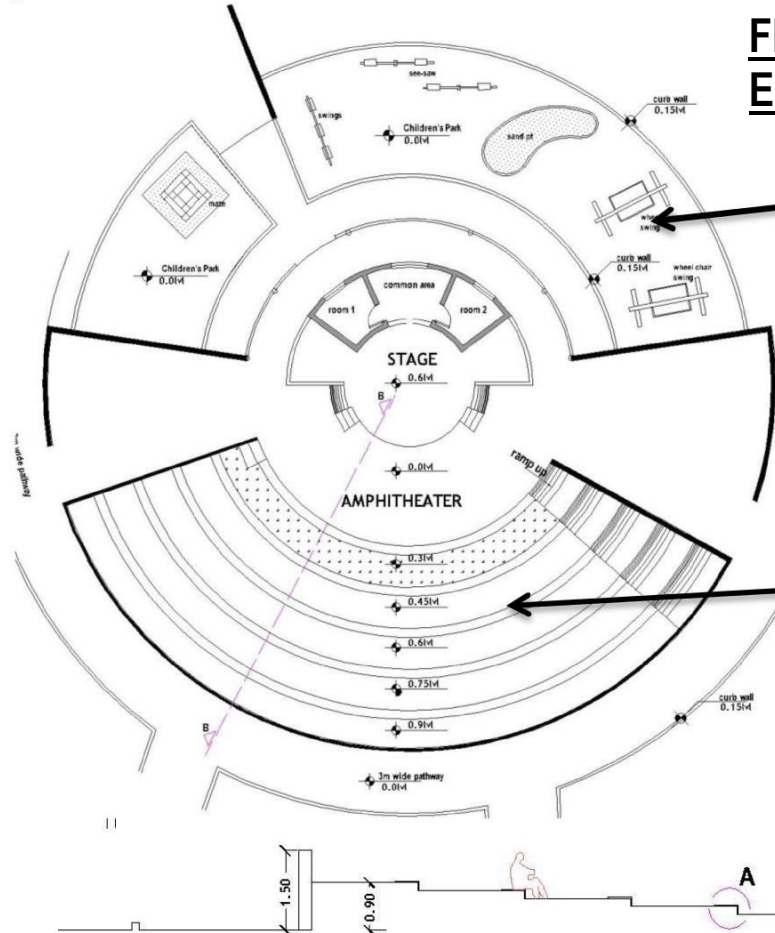


THERAPY BLOCK - VIEWS

PROPOSED PARK FOR THE DISABLED AT NALGONDA CROSS ROADS



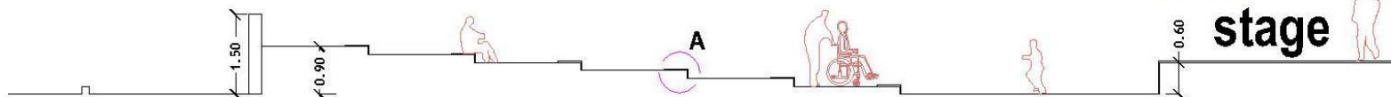
FRONT ELEVATION



PLAN

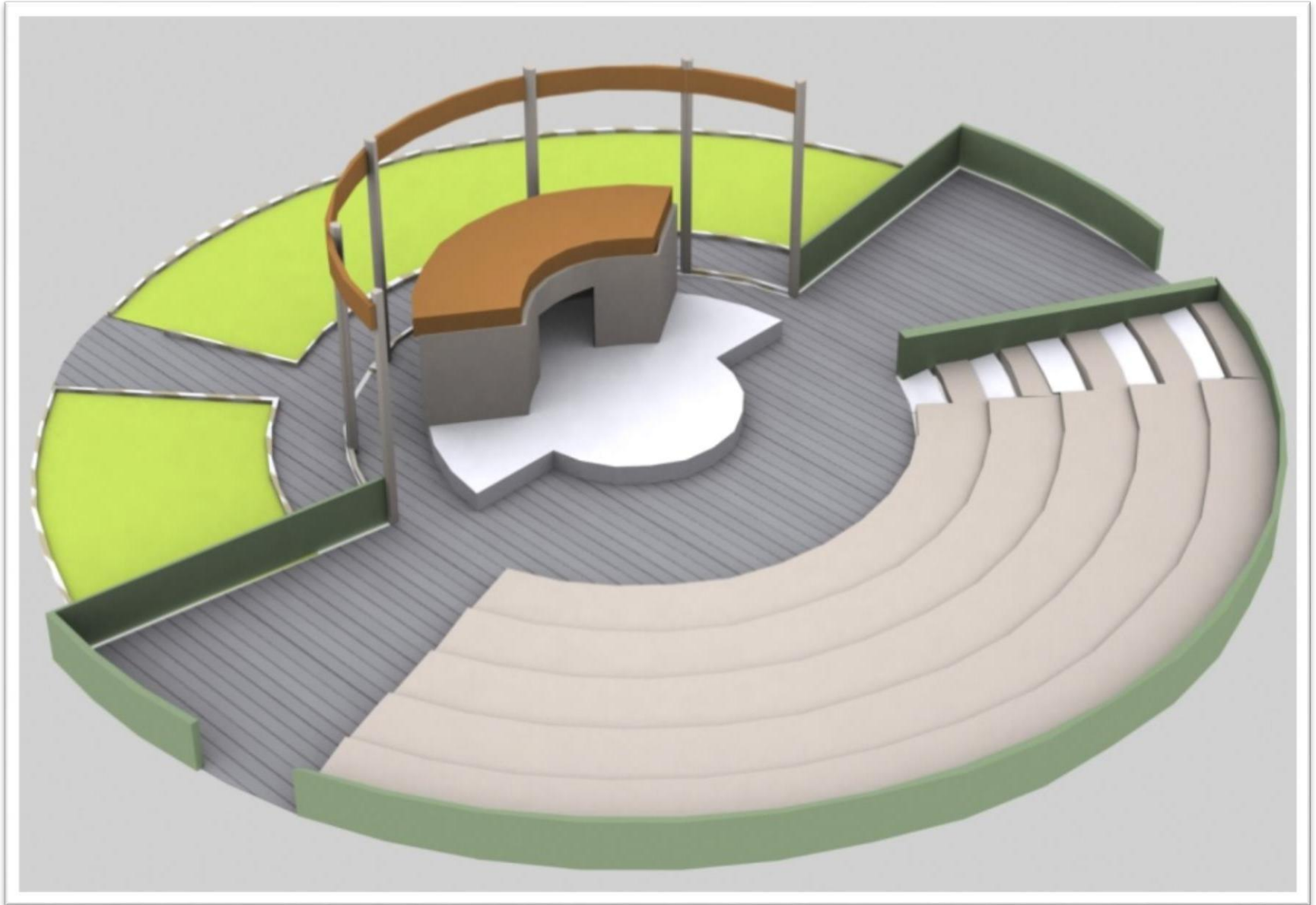


stage



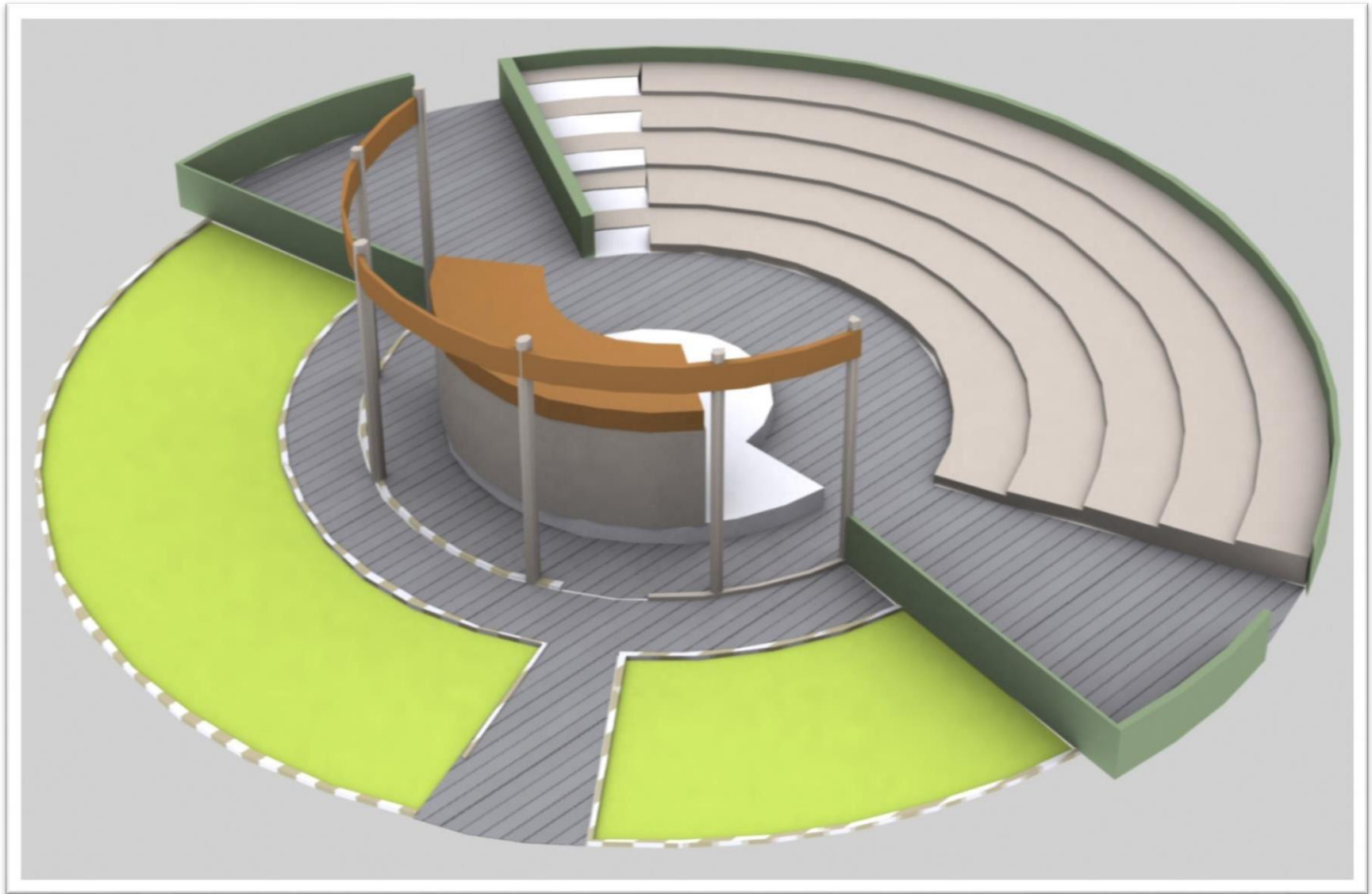
AMPHITHEATER

PROPOSED PARK FOR THE DISABLED AT NALGONDA CROSS ROADS



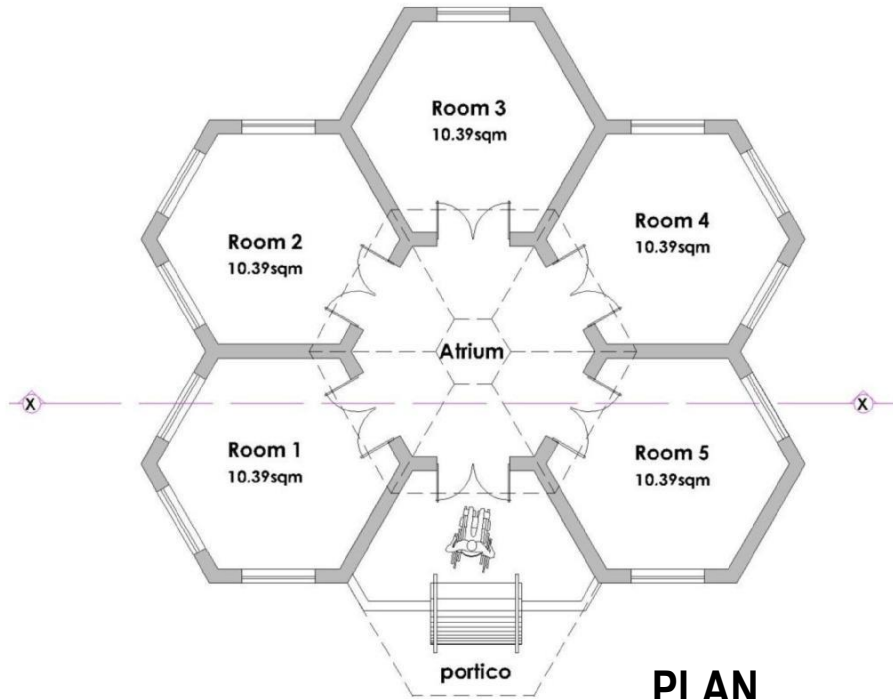
AMPHITHEATER – VIEW 1

PROPOSED PARK FOR THE DISABLED AT NALGONDA CROSS ROADS

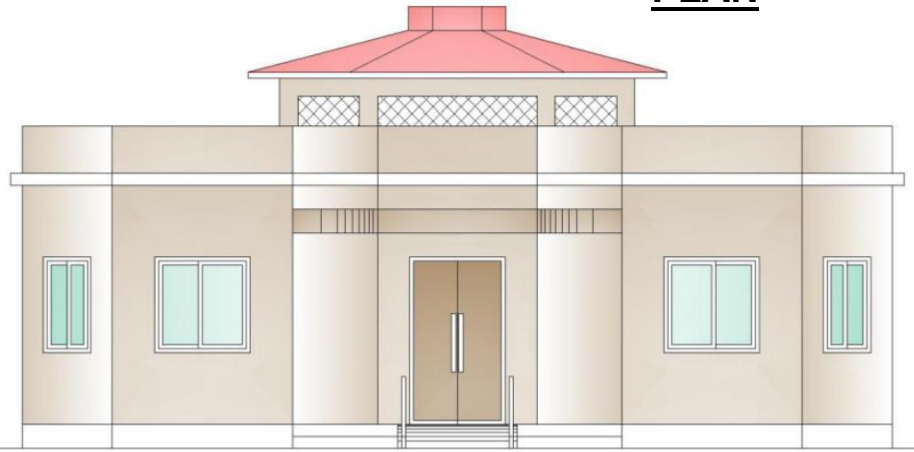


AMPHITHEATER – VIEW 2

PROPOSED PARK FOR THE DISABLED AT NALGONDA CROSS ROADS



PLAN



FRONT ELEVATION



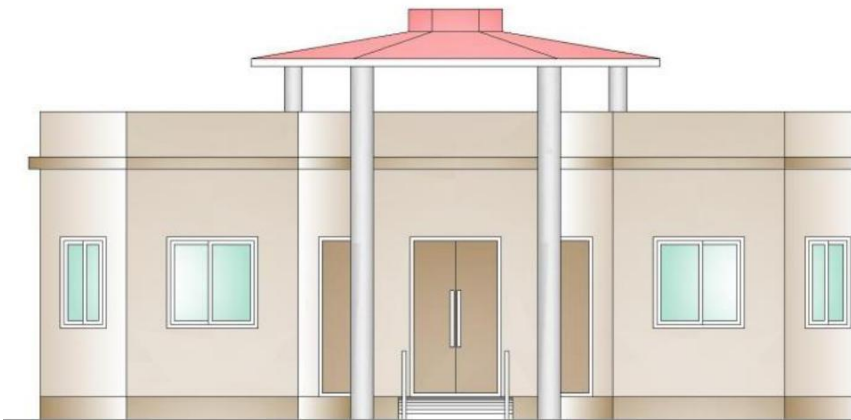
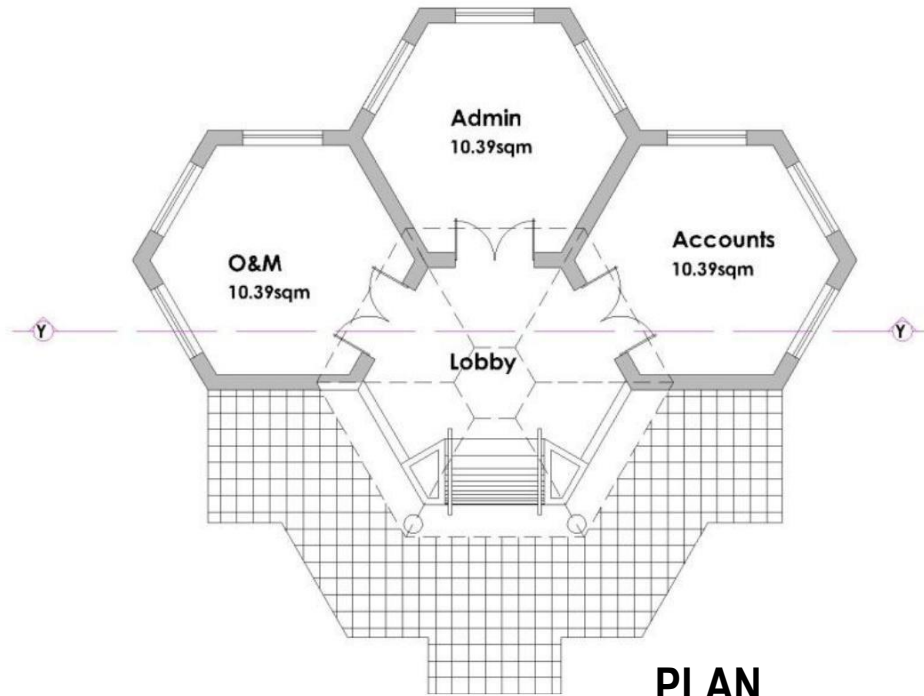
SENSORY ROOMS

PROPOSED PARK FOR THE DISABLED AT NALGONDA CROSS ROADS

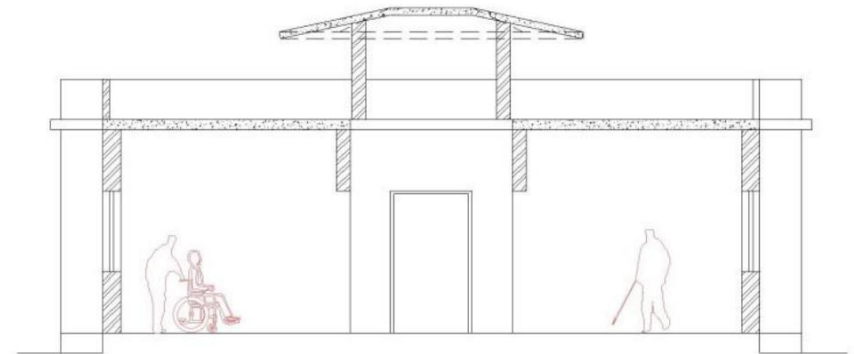


SENSORY ROOMS – VIEW 1

PROPOSED PARK FOR THE DISABLED AT NALGONDA CROSS ROADS



FRONT ELEVATION



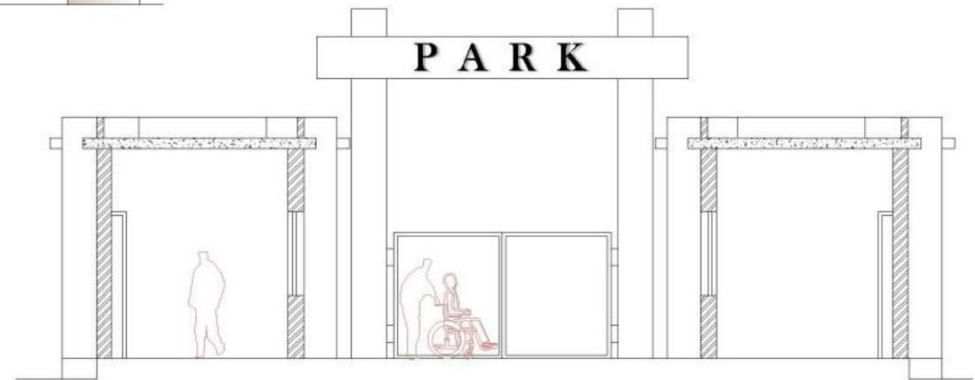
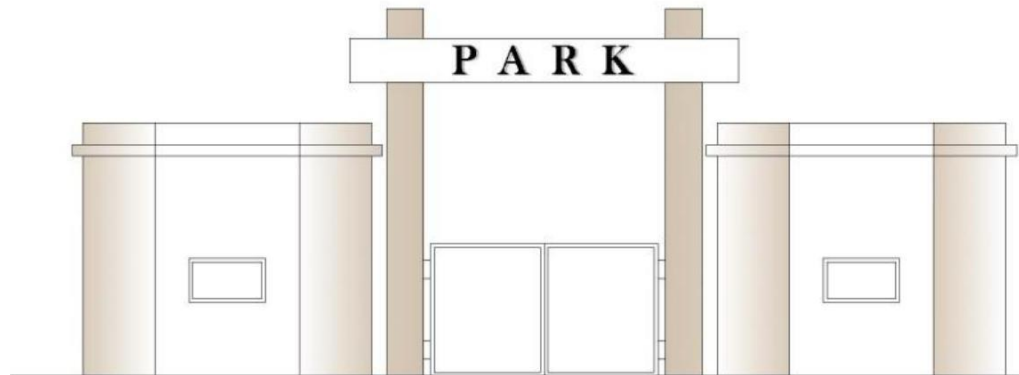
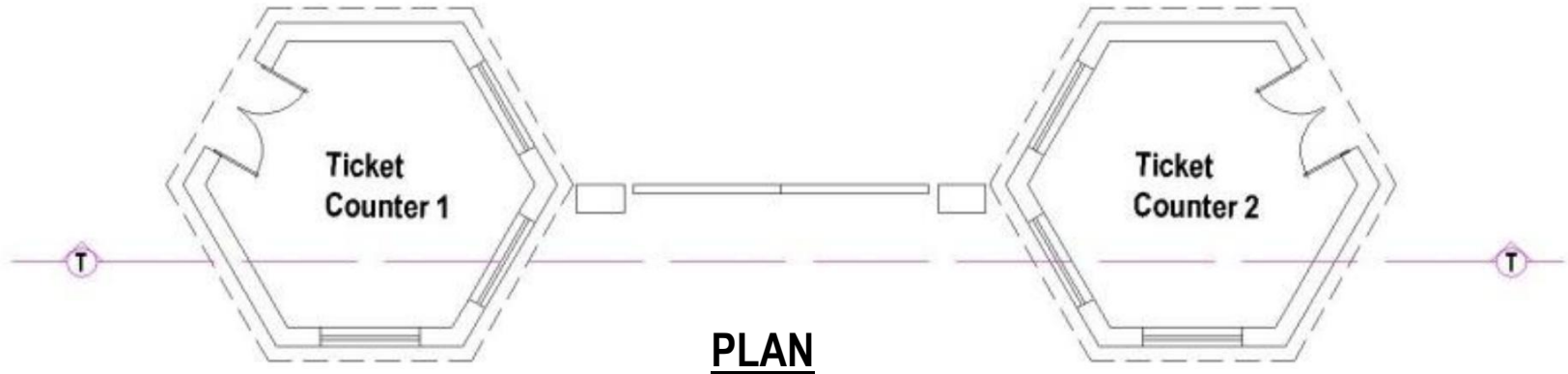
ADMINISTRATION BLOCK

PROPOSED PARK FOR THE DISABLED AT NALGONDA CROSS ROADS



ADMINISTRATION BLOCK – VIEW 1

PROPOSED PARK FOR THE DISABLED AT NALGONDA CROSS ROADS



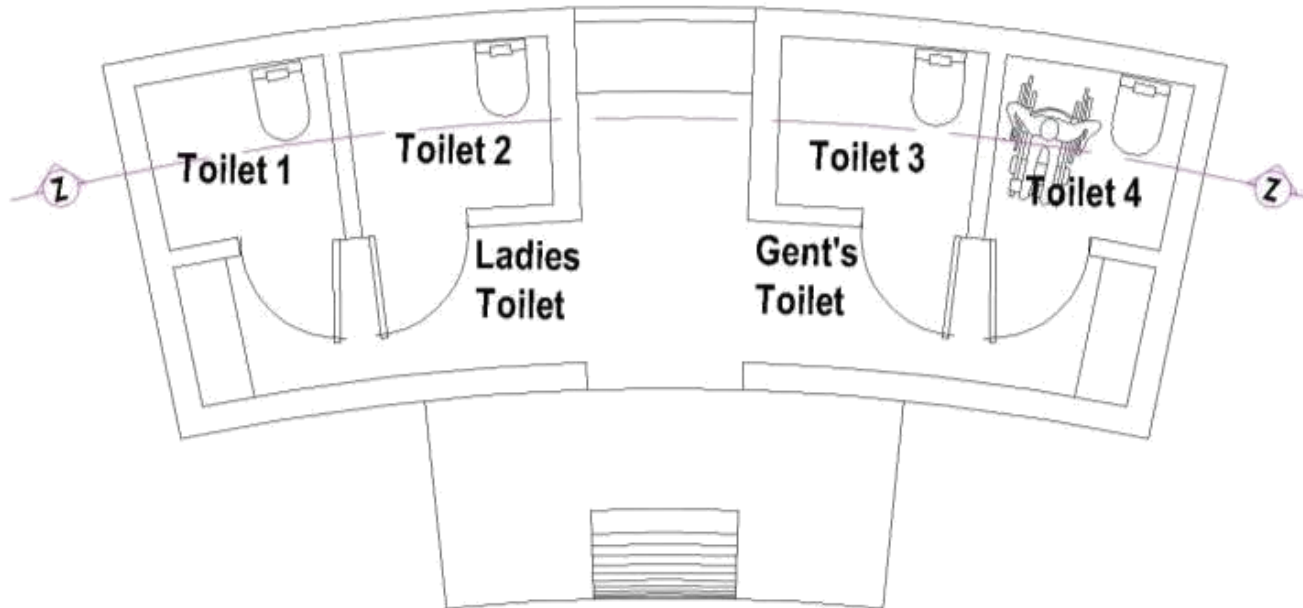
ENTRANCE PLAZA

PROPOSED PARK FOR THE DISABLED AT NALGONDA CROSS ROADS



ENTRANCE PLAZA – VIEWS

PROPOSED PARK FOR THE DISABLED AT NALGONDA CROSS ROADS



PLAN



FRONT ELEVATION

TOILET BLOCK

PROPOSED PARK FOR THE DISABLED AT NALGONDA CROSS ROADS

S.NO	DESCRIPTION	AREA IN SQMT	Cost (in Lakhs)	Cumulative Cost (in Lakhs)
1	Therapy Block	235.45	45.57	45.57
2	Green rooms	26.62	5.13	50.70
3	Sensory Rooms	75.36	14.58	65.28
4	Administration	50.01	9.7	74.98
5	Toilet Block	28.75	5.56	80.54
6	Children's Park	243.25	1.46	82.00
7	Lawn Area	1190.9	7.15	89.15
8	Nursery	55.15	included	
9	Amphitheater	642.96	3.86	93.01
10	Paving	977.54	5.86	98.87
11	Curb Wall	82.32	4.94	103.81
12	Compound Wall+ Gate	499.01	29.86	133.67
13	Ticket Counter(2nos)	23.68	2.54	136.21
14	Parking	233.01	1.40	137.61
15	Boundary plantation	423.01	0.25	137.86
TOTAL			137.86	137.86

- Electrification @ 10%
- Water supply @10%

AREA STATEMENTS